

# AutoForm-Explorer®

Software for Stamping Process Simulation  
Setup and Results Evaluation



- ▶ Quick and accurate process setup
- ▶ Rapid assessment of process feasibility
- ▶ Easy and fast issue identification and interpretation
- ▶ Systematic improvement and robustness check of entire process
- ▶ Effective use of individual company standards
- ▶ Easy visualization of surface imperfections – digital stoning



**AUTOFORM**  
*Forming Reality*

# AutoForm-Explorer®

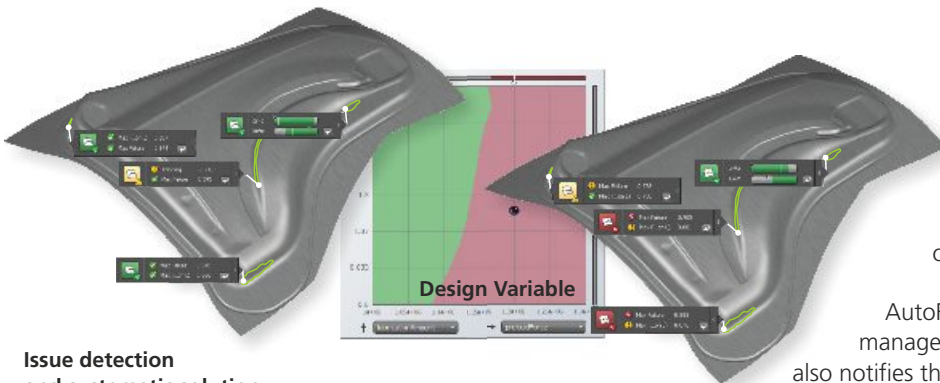
## Efficient Process Simulation Setup and Results Evaluation

AutoForm-Explorer enables process engineers to quickly and easily set up the manufacturing process by defining the tool geometries (created in CAD or by AutoForm-DieDesigner) for each station. With AutoForm-Explorer, results can be evaluated using colored map generated according to defined company standards.

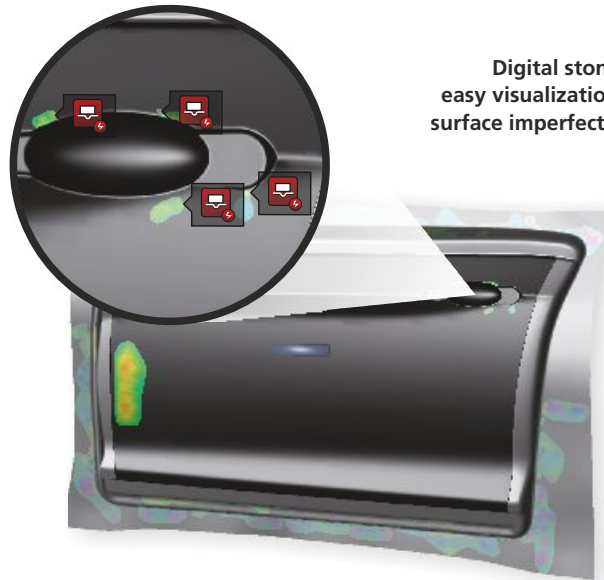
AutoForm-Explorer with its intuitive workflow-based user interface concept enables engineers to prepare an efficient process simulation setup. This new interface allows for the definition of all relevant process parameters and the related tool geometries so that the engineering workflow can be fully and consistently mapped into the simulation data.

With AutoForm-Explorer, interpreting results can be carried out quickly and easily. Semi-automatic issue identification facilitates and speeds up the identification of stamping issues as well as the types of issues and their locations. The user is led frame-by-frame to critical areas that require attention and thereby prevents any possible misinterpretations or oversights. Users can then track the progression of identified issues and quickly compare them by using synchronized multi design views.

Contrary to the typical trial-and-error approach, calculations performed by AutoForm-Sigma allow the user to fix all issues by systematically modifying process parameters. A dedicated interface helps designers to identify the process window, which is defined by the interactions of multiple parameters and then systematically adapt the most appropriate countermeasures.



Issue detection and systematic solution



Digital stoning: easy visualization of surface imperfections

In addition, the software allows for draw-in evaluation by measuring the distance between the original blank boundary curve and the boundary curve of the drawn-in part, which leads to optimized material utilization.

The stamping process affects the surface appearance and thus influences surface quality. AutoForm-Explorer enables easy visualization of surface imperfections by digital stoning method. This method emulates the back and forth scratching of a stone block on a stamped outer panel.

AutoForm-Explorer fully supports the usage and management of company standards. The software also notifies the user of any deviations from the standard and thus ensures that work undertaken is consistent and in compliance with the defined norms and standards.

### AutoForm Engineering – Company Offices

Switzerland	Pfäffikon SZ	+41 43 444 61 61
Germany	Dortmund	+49 231 9742 320
The Netherlands	LB Capelle aan den IJssel	+31 180 668 255
France	Aix-en-Provence	+33 4 42 90 42 60
Spain	Barcelona	+34 93 320 84 22
Italy	Turin	+39 011 620 41 11
Czech Republic	Praha	+420 603 248 580
Sweden	Stockholm	+31 180 668 255
United States	Troy, MI	+1 888 428 8636
Mexico	Corregidora, Qro.	+52 442 225 1104
Brazil	São Bernardo do Campo	+55 11 4122 6777
India	Hyderabad	+91 40 4068 9999
China	Shanghai	+86 21 5386 1153
Japan	Tokyo	+81 3 6459 0881
Korea	Seoul	+82 2 2113 0770



© 2020 AutoForm Engineering GmbH, Switzerland.  
"AutoForm" and other trademarks listed under [www.autoform.com](http://www.autoform.com) or trade names contained in this documentation or the Software are trademarks or registered trademarks of AutoForm Engineering GmbH. Third party trademarks, trade names, product names and logos may be the trademarks or registered trademarks of their respective owners. AutoForm Engineering GmbH owns and practices various patents and patent applications that are listed on its website [www.autoform.com](http://www.autoform.com). Software and specifications may be subject to change without notice.

Publication E-3-E

**AUTOFORM**  
Forming Reality