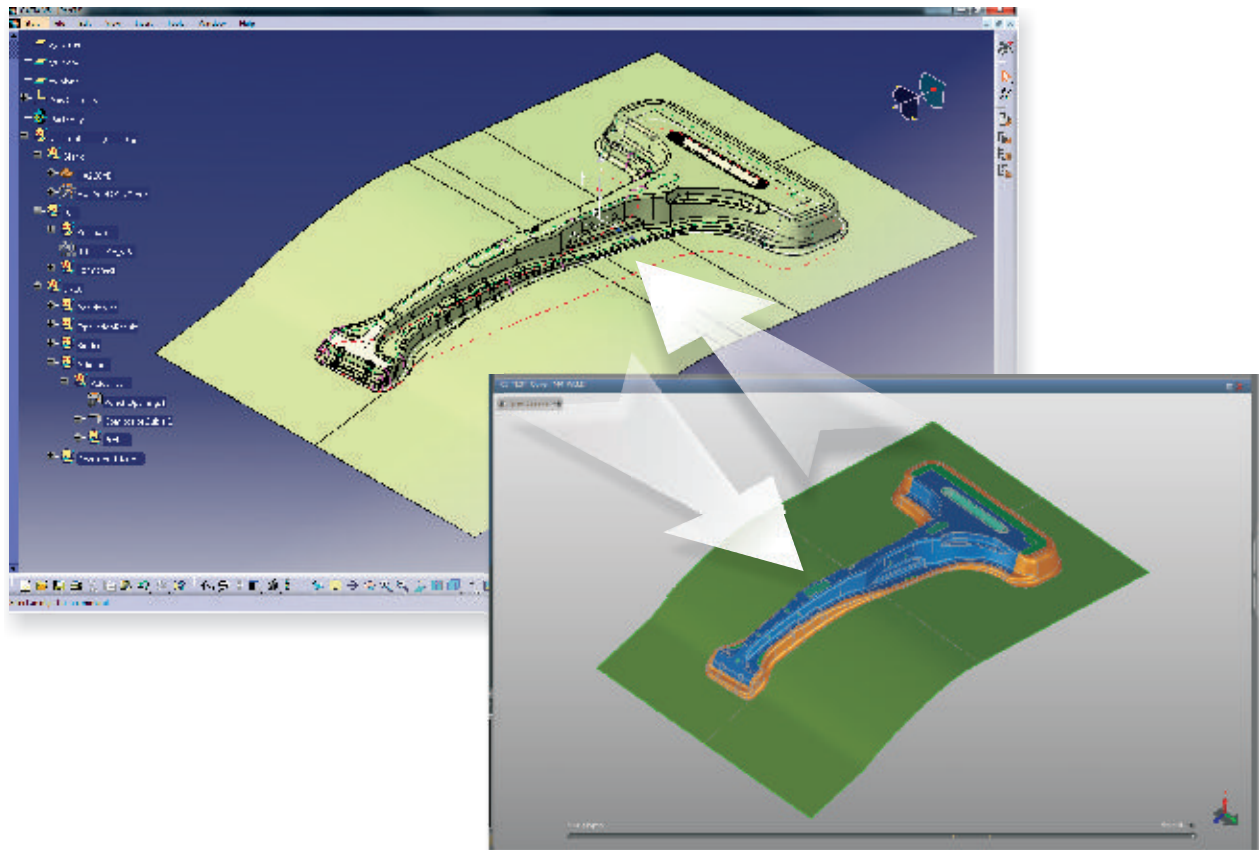


# **AutoForm** for CATIA QuickLink

## Software for

Fast and Easy Data Exchange Between AutoForm and CATIA



- ▶ Selective import and export of geometry and process data between AutoForm and CATIA
- ▶ Improved data consistency, transparency and usability
- ▶ Speedup of CAD design process
- ▶ Efficient prevention of downstream problems and defects
- ▶ Supply chain support

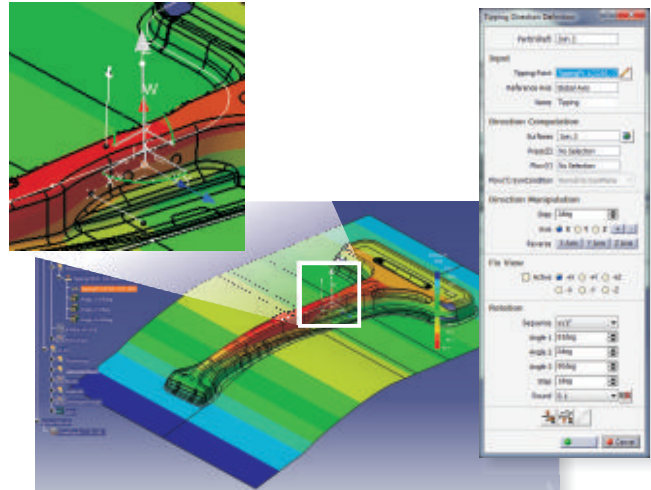


# AutoForm-QuickLink<sup>for</sup>CATIA

The software allows for bi-directional data transfer between AutoForm and CATIA.

**AutoForm-QuickLink<sup>for</sup>CATIA** ensures seamless data flow between AutoForm and CATIA. As a result, process design departments are able to enhance their work efficiency through more effective collaboration with both in-house and external departments.

**AutoForm-QuickLink<sup>for</sup>CATIA** enables users to easily export the process data from AutoForm into the CATIA environment. The exported data includes: concept geometry data such as surfaces (die, form and wiper tools), curves (profiles, drawbead lines and material zones) and points (pilot, sphere and spacer groups and clamps), project information, material information such as name and thickness, as well as process information such as operations, positioning and cam direction. In addition, users can export results such as formcheck and simulation results.

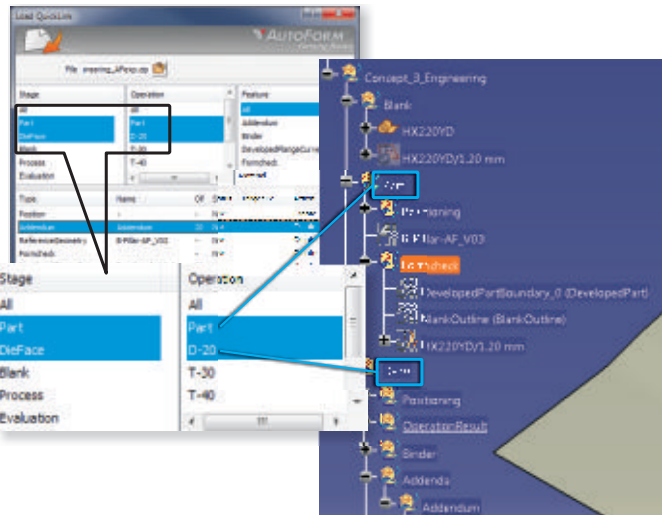


**AutoForm-QuickLink<sup>for</sup>CATIA** allows for the easy modification of geometry, part position, tipping and cam directions.

Based on the imported process data, **AutoForm-ProcessDesigner<sup>for</sup>CATIA** allows users to rapidly design the process, in particular to generate CAD quality surfaces in the CATIA environment. **Process design results generated in the CATIA environment can then be easily exported for the final validation in AutoForm.**

Due to the automatic and consistent naming of imported and exported features, **AutoForm-QuickLink<sup>for</sup>CATIA** leads to a significant speedup of the CAD design process and efficiently prevents errors which may occur during manual import and export operations.

**AutoForm-QuickLink<sup>for</sup>CATIA** ensures efficient data exchange and improves data consistency, transparency and usability.



The user can manage and select the content of the import by selecting the appropriate items in the Stage, Operation and Feature columns. The imported data is then listed automatically within the CATIA tree.

## AutoForm Engineering – Company Offices

Switzerland	Wilten b. Wollerau	+41 43 444 61 61
Germany	Dortmund	+49 231 9742 320
The Netherlands	Krimpen a/d IJssel	+31 180 668 255
France	Aix-en-Provence	+33 4 42 90 42 60
Spain	Barcelona	+34 93 320 84 22
Italy	Turin	+39 011 620 41 11
Czech Republic	Praha	+420 603 248 580
Sweden	Stockholm	+31 180 668 255
United States	Troy, MI	+1 888 428 8636
Mexico	Corregidora, Qro.	+52 442 225 1104
Brazil	São Bernardo do Campo	+55 11 4121 1644
India	Hyderabad	+91 40 4068 9999
China	Shanghai	+86 21 6352 8848
Japan	Tokyo	+81 3 6459 0881
Korea	Seoul	+82 2 2113 0770

