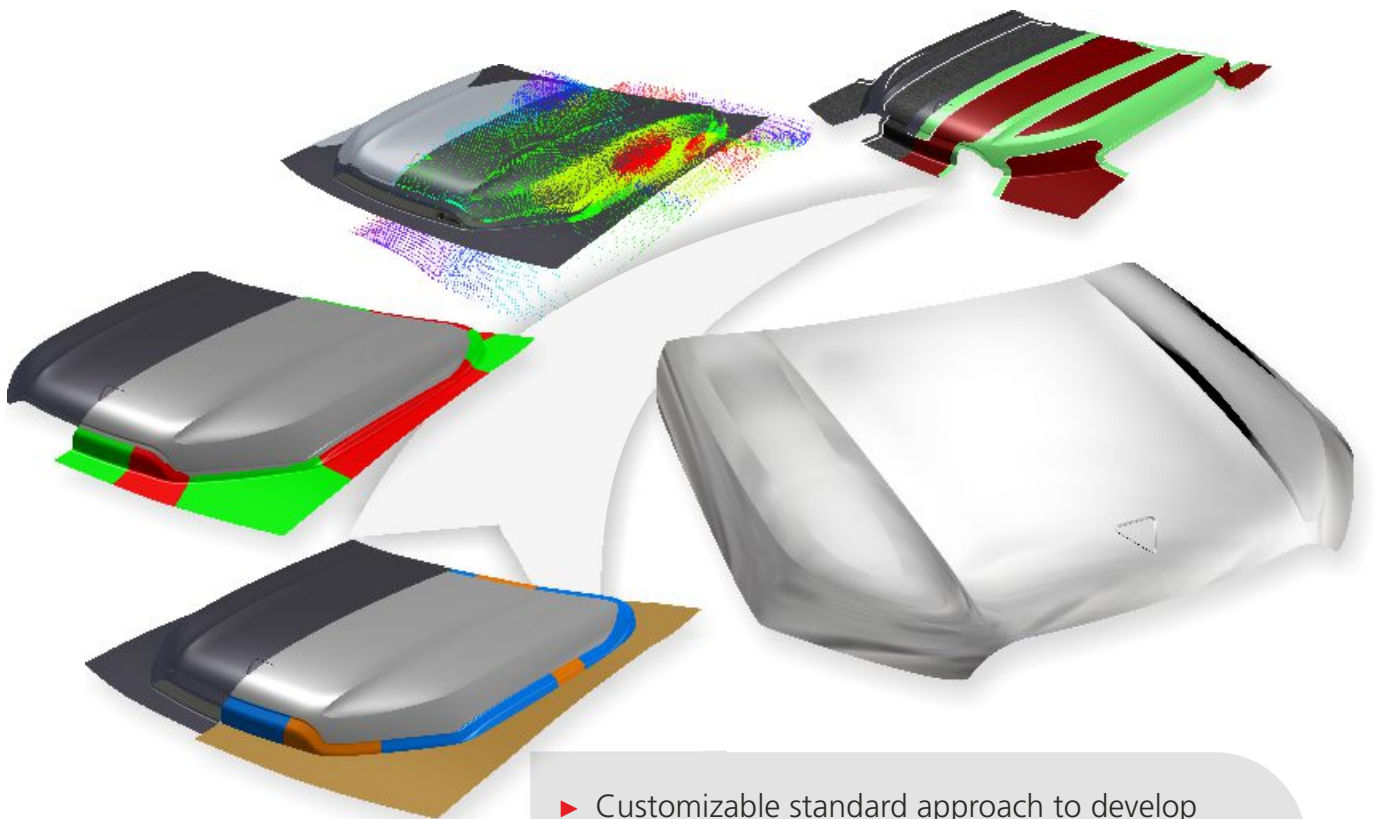


AutoForm- ProcessDesigner^{for}CATIA

Software for Efficient and Rapid Design of
Stamping Processes Embedded in CATIA V5



- ▶ Customizable standard approach to develop process design throughout all operations
- ▶ Consistent methodology for CAD quality in die face design
- ▶ Easy-to-use dedicated surfacing tools with built-in analysis functions
- ▶ Powerful springback compensation capability, including Class A
- ▶ Dedicated features for NC data preparation
- ▶ Seamless interoperability with AutoForm Forming simulation



AUTOFORM
Forming Reality

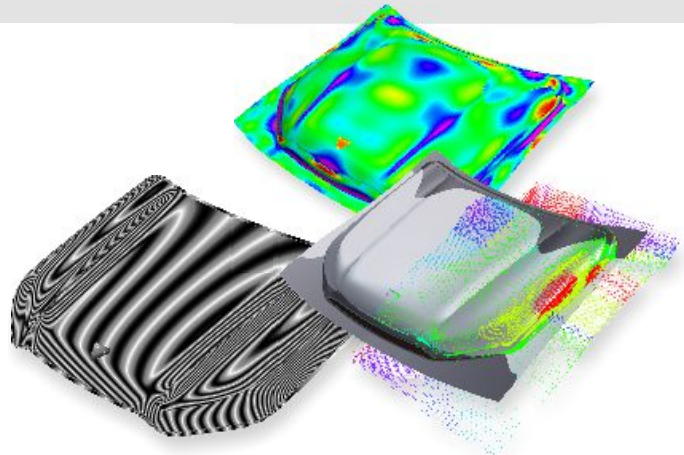
AutoForm-ProcessDesigner^{for}CATIA

Custom-Tailored CATIA-Embedded Software for Process Designers

AutoForm-ProcessDesigner^{for}CATIA enables engineers to improve their efficiency in process design with an innovative standardized workflow and specialized functions. The software combines AutoForm's expertise in sheet metal forming with CATIA-based process development.

AutoForm-ProcessDesigner^{for}CATIA provides powerful dedicated surfacing tools designed to support process engineering tasks. The software enables the user to quickly create a process layout, including deep drawing and all secondary operations, directly in CATIA V5.

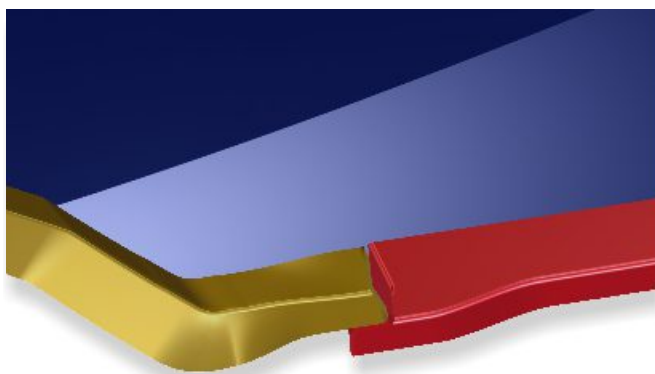
Once the part geometry is available in CATIA, the optional standard methodology in AutoForm-ProcessDesigner^{for}CATIA guides the user from part preparation to process layout design and NC preparation. Its user-friendly, intuitive features along with real-time analysis functions allow for the highest level of data consistency. Through the automatic update of the entire process, predefined dependencies between tasks and operations support users to prevent errors.



Powerful springback compensation capability for Class A surfaces. Various analysis methods are available, such as delta analysis to check accuracy and zebra line analysis to check quality.

AutoForm-ProcessDesigner^{for}CATIA enables users to carry out springback compensation and ensures that all generated surfaces fulfill the part's expected quality requirements before milling. NC preparation with AutoForm-ProcessDesigner^{for}CATIA is performed using a comprehensive set of tools. Reliefs and contact surfaces can be built into the process model to match the final manufacturing intent. As this process model can then be used in the final validation simulation, efforts in tool tryout are minimized.

CATIA users can significantly benefit from the integration of AutoForm-ProcessDesigner^{for}CATIA. It is the result of an innovative, unique and quality-oriented approach in process design, which improves and facilitates daily work in process design departments by ensuring standardization and data consistency.



A gooseneck flange steel designed with AutoForm-ProcessDesigner^{for}CATIA

AutoForm Engineering – Company Offices

Switzerland	Pfäffikon SZ	+41 43 444 61 61
Germany	Dortmund	+49 231 9742 320
The Netherlands	LB Capelle aan den IJssel	+31 180 668 255
France	Aix-en-Provence	+33 4 42 90 42 60
Spain	Barcelona	+34 93 320 84 22
Italy	Turin	+39 011 620 41 11
Czech Republic	Praha	+420 603 248 580
Sweden	Stockholm	+31 180 668 255
United States	Troy, MI	+1 888 428 8636
Mexico	Corregidora, Qro.	+52 442 225 1104
Brazil	São Bernardo do Campo	+55 11 4122 6777
India	Hyderabad	+91 40 4068 9999
China	Shanghai	+86 21 5386 1153
Japan	Tokyo	+81 3 6459 0881
Korea	Seoul	+82 2 2113 0770

© 2020 AutoForm Engineering GmbH, Switzerland.

"AutoForm" and other trademarks listed under www.autoform.com or trade names contained in this documentation or the Software are trademarks or registered trademarks of AutoForm Engineering GmbH. Third party trademarks, trade names, product names and logos may be the trademarks or registered trademarks of their respective owners. AutoForm Engineering GmbH owns and practices various patents and patent applications that are listed on its website www.autoform.com. Software and specifications may be subject to change without notice.

Publication PD-3-E



AUTOFORM
Forming Reality