

## Press Release

### Franke Increases Production Quality of Kitchen Sinks with AutoForm-OneStep Software

Zurich, July 4, 2005. Franke Küchentechnik AG of Switzerland, a leading manufacturer worldwide of kitchen sinks and washroom systems, has reduced the reject rate in their stamping of a complex stainless steel sink from 14% to 2,5% – an improvement of more than 500% – using AutoForm-OneStep software.

Christian Bomatter, Franke Küchentechnik's Development Manager explains: "AutoForm-OneStep is used for all of our new deep-drawn and stamped parts, for the optimization and reengineering of existing parts, as well as for feasibility studies based on FEM assessments. Simulation has become an integral part of our work, and it is now deeply anchored in our quality procedures. AutoForm-OneStep offers us many advantages: We can make appropriate assessments about new sink designs and their formability, we better achieve our design objectives, and we can design parts at acceptable formability limits with a lot more confidence."

AutoForm-OneStep is a software solution with a wide range of applications in process development: from product formability assessments and material cost optimization, to support of tooling development and process layout. The software is used by product designers, engineers and process designers, and allows for optimizations of product designs and for assessments of new materials. AutoForm-OneStep customers include such leading companies as BMW, Ford, GM, Hyundai, Mitsubishi and Nissan.

Christian Bomatter adds: "We are extremely pleased with AutoForm-OneStep. To be able to work successfully with the software, the user should have some basic forming knowledge. We have been getting very good results and have already processed many new parts. In addition, we have gained a lot of experience and our assessments are realistic and entirely consistent with measurements of the final stamped parts. The software allows us to optimize the parts prior to their production, which saves us both time and money."

#### **About Franke Küchentechnik AG**

*Franke Küchentechnik AG is a worldwide leader in the manufacture and supply of kitchen sink systems, and washroom and sanitary equipment. The "Franke" brand is recognized globally for top quality kitchen products, and the company is also known for its record of continuous innovation and product development. Franke Küchentechnik has approximately 310 employees in Aarburg, Switzerland and had a turnover of 135 Million Swiss Francs in 2004. The company's products are marketed in Switzerland and in more than 100 countries across the world. [www.kt.franke.ch](http://www.kt.franke.ch). Franke Küchentechnik AG is a division of Franke Division Kitchen Systems, Aarburg/Switzerland. [www.franke.com](http://www.franke.com)*

#### **About AutoForm Engineering**

*AutoForm Engineering develops and markets specialized die face design and simulation software for the automotive and sheet metal forming industries. With all of the Top 20 automobile producers as customers, AutoForm is recognized as the number one provider of software for product formability, die face design and virtual tryouts to the global automotive industry. AutoForm offices are located in Switzerland, Germany, Spain, Italy, France, The Netherlands, USA, China and Korea. The company also serves the needs of its customers through agents and distributors in more than 15 other countries (Japan, Turkey, Brazil, etc.). For detailed information visit: [www.autoform.com](http://www.autoform.com)*

**AutoForm-OneStep** offers the following features:

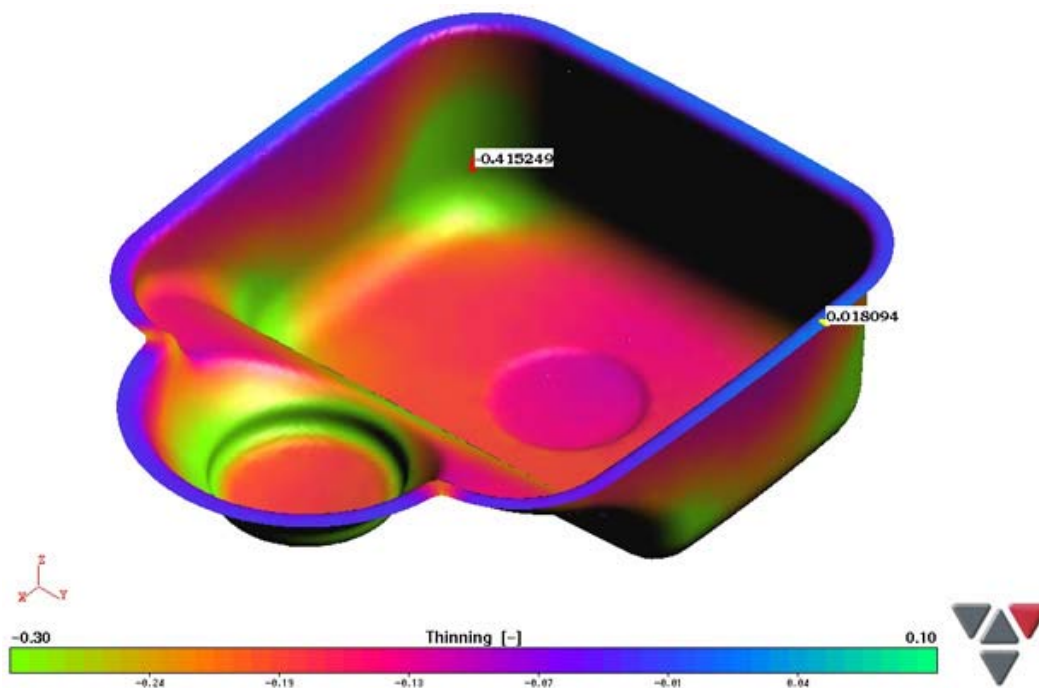
- Real-time design studies by part designers
- Simulations based on part or tooling geometry
- Wizard for intuitive, fast and error-free setup
- Simulation of tailored blanks
- Automatic and interactive determination of die tip
- Extensive material data base
- Development and export of accurate blank outlines
- Development of optimal shear outline for developed blanks
- Support of various data formats for geometry import

#### **Contact:**

Dr. Markus Thomma  
Director of Marketing  
AutoForm Engineering GmbH  
Technoparkstrasse 1  
CH-8005 Zurich  
Switzerland  
Phone: +41 43 444 61 61  
Fax: +41 43 444 61 62  
Email: [markus.thomma@autoform.ch](mailto:markus.thomma@autoform.ch)



Attractive and multi-functional – the sink "Franke Beach"



Thinning as a result of deep drawing is pictured in different colors. It's one of the most important criteria for optimization of the part.

If you need a high resolution image, please contact us.